

# ***ECO 3 EXPERT***

Black & White with Doppler,  
Stunningly Good.



CE [www.chison.com](http://www.chison.com)

**CHISON**  
Value Beyond Imaging



# Advanced Imaging Technologies

## ECHO

- Advanced technologies:  
i-Image(Intelligent image optimization)  
THI(Tissue Harmonic Image)  
SRA(Speckle Reduction Algorithm)  
Compound imaging
- Full digital beam-former
- Trapezoid
- Automatic PW trace
- Chroma
- Full screen display mode
- AIO(Automatic image optimization)



## Ergonomics

- Rotatable LED (0~30°) : tailor to different viewing angles
- Ultra-compact & Ultra-light
- Easy to carry
- Keyboard : For easy and quick access
- Dedicated cart TR9000
- Streamlined workflow

## Economic

- The latest platform & more advanced chip-set: brings you better image quality and features at less cost in a more compact box
- Support PC printer(HP 1102,HP M251n) : reduce investment & day to day paper cost
- 8G memory card
- 320G harddisk (option)
- Chargeable from your car

## ECO-friendly

- Less radiation
- Less power consumption
- Longer usage life:LED
- Longer battery standby time:2.5 hours



Ultra-compact



Carry case (BG-100)



Dual probe-holder



Chargeable from your car



- Full Screen display mode

**Excellent PW** resolution and automatic PW trace measurement will greatly improve the diagnosis confidence by delivering both qualitative & quantitative results.

Streamlined workflow, Easy diagnosis !

ONLY **6** STEPS!!



**1. ONE KEY** to selected the desired application with automatic preset



**2. ONE KEY** to optimize the image automatically.

AIO(Automatic image optimization)



**3. ONE KEY** to save still image and CINE loop



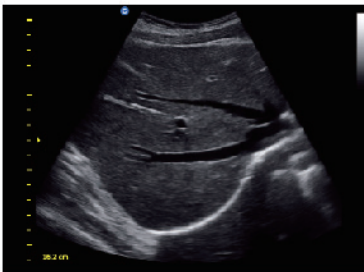
**4. ONE KEY** to measure



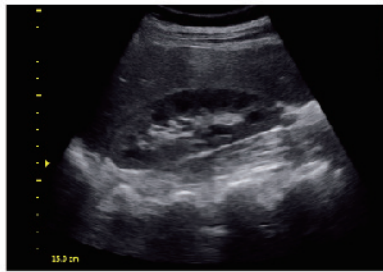
**5. ONE KEY** to make report



**6. ONE KEY** to print to PC or video printer (see page 4 option)



Liver,B Mode



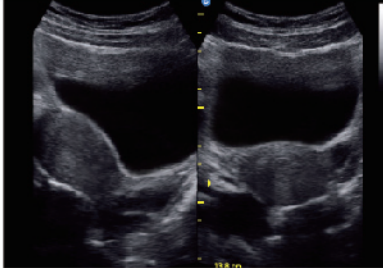
Kidney,B Mode



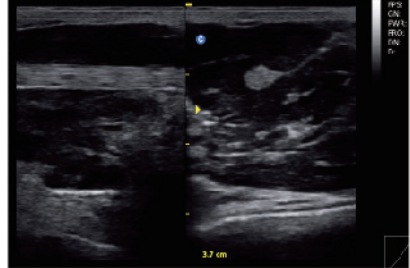
Fetal leg,B Mode



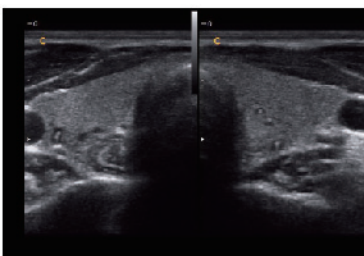
Fetal head,B Mode



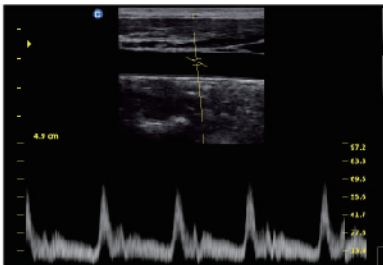
Uterus,2B Mode



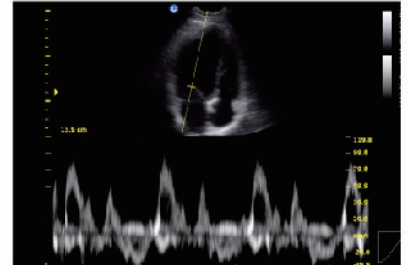
MSK,2B Mode



Thyroid,2B Mode



Carotid,PW Mode



Cardiac,PW Mode

# Specification

Applications	Abdomen,OB/GYN,Vascular, Small parts(breast, testes, thyroid),Musculo-skeletal Conventional & Superficial, Pediatric, Basic Cardiac
Imaging technologies	i-Image,SRA,Compound imaging,THI
Display Modes	B, B/B, 4B, M, B/M,PW
Gray Scale	256 Levels
Scanning Depth	240mm Max (depend on the probe types)
Probe Frequency	2.5 MHz - 11.0 MHz (Depend on the probe)
Cine Loop	256 frames
Zoom	4 steps
Software Packages	Dedicated measurement package:General , OB/GYN,URO , Cardiac,vascular,small parts
Archives Management	Patient information management, images record, exam report.
Documentation	Full screen documentation, Hospital name, Patient name, Date/time OB growth curve
Power Supply	AC 100V-240V, 50Hz- 60Hz
Standard Configuration	Main unit , 2.5MHz - 5.0MHz Convex probe C3-A, 2 probe connectors, 3 USB ports, VGA port ,Video port ,LAN port, Full Screen Display Mode,i-Image,Chroma ,SRA, Compound imaging,THI,8G memory card,PW Mode,Built-in Battery ( BT-2500 )
Option	DICOM 3.0, Water-proof keyboard cover, Carry Case (BG-100 ),Cart TR-9000 Support PC Printer*(HP P2055D / HP 1102 / HP M251n) ,Video Printer(Sony UPD711MD)



2.5MHz-5.0MHz Convex  
C3-A



5.3MHz-10.0MHz Linear  
L7M-A



5.3MHz-11.0MHz Linear  
L7S-A



2.5MHz-5.0MHz Micro-Convex  
MC3-A



4.0MHz-8.0MHz Transvaginal  
V6-A



4.5MHz-8.0MHz Micro-Convex  
MC6-A



5.0MHz-10.0MHz Transrectal  
R7-A

## CHISON MEDICAL IMAGING CO., LTD.

No. 9 Xin Hui Huan Road, New District, Wuxi, Jiang Su Province, China214028  
TEL: 0086-510-85310593 / 85310937 FAX: 0086-510-85310726 EMAIL: export@chison.com.cn



We reserve the right to make changes to this catalogue without prior notice.  
Please contact us or your local dealer for the latest information.

\* Please refer to the user manual for details

ECO3 EXPERT-150203